



## TOOLS & MATERIALS

### SCISSORS

A sturdy pair of scissors is necessary to cut through two layers of card stock

### BALL POINT PEN

The best scoring tool is a ball point pen, but it can only be used on the back side of the pop-up.

### RULER

Use a ruler to draw the scoring lines.



## SCORE BEFORE FOLDING

To make clean folds you must score the card (crush the paper without piercing it) along the fold lines. Always use a ruler and press down firmly over a smooth surface with a ball point pen (on the reverse side).

If you prefer scoring on the picture side, use a plastic knitting needle, a stylus pen or another similar tool with a blunt tip.

## Instructions

### For the pop-up postcard

#### Step 1:

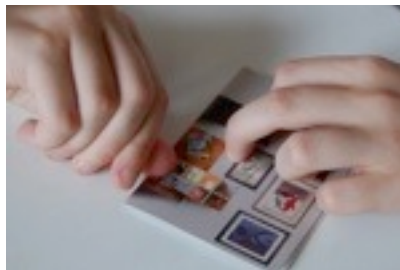
#### Score the line dividing the wall from the floor

The line in the center next to the instructions should correspond to the division between the wall and the floor.



#### Step 2:

#### Fold card with the picture facing out



#### Step 3:

#### Cut the chair and table

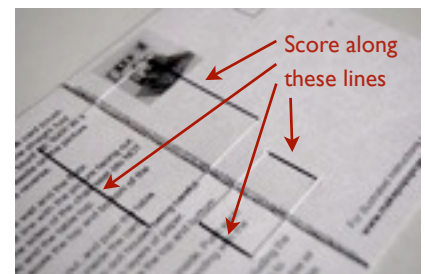
Use your scissors to cut the sides of the chair seat (NOT the chair's back) and the table top.



#### Step 4:

#### Score the table and chair

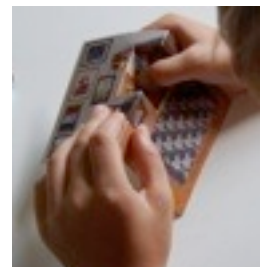
Open the card and score the top and bottom of the table and chair, using your cuts as a reference.



#### Step 5:

#### Push the table forward

Fold the card so the table is folded flat inside the card and the image is facing out.

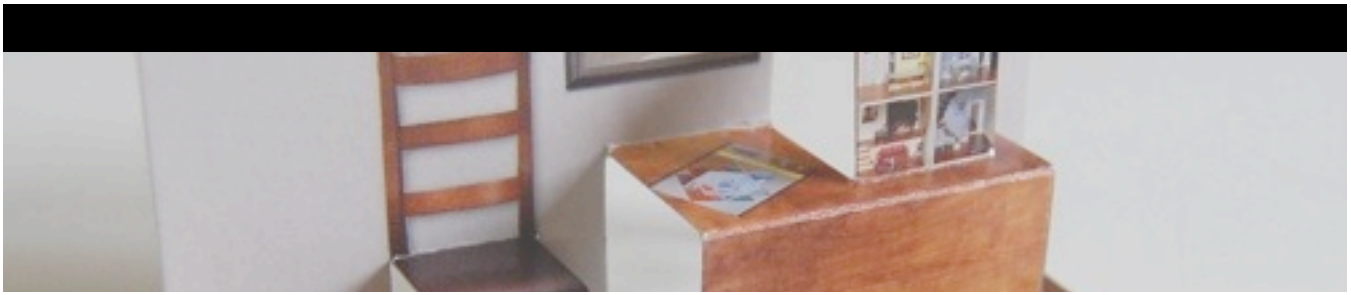


#### Step 6:

#### Cut the pop-up doll house

Cut both sides of the doll house, being careful to cut through only the top two layers of paper.





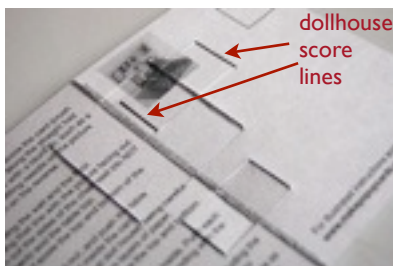
## Pop-up postcard instructions

Page 2

### Step 7:

#### Score the doll house

Unfold the card and score the top and bottom of the dollhouse.



### Step 8:

#### Make the chair pop out



Push the seat forward while folding the card. Close the card all the way and crease the folds with your fingernails.

### Step 9:

#### Make the table pop out



Repeat step 8 for the table.

### Step 10:

#### Make the doll house pop up

Since the doll house is close to the edge of the table, care must be taken when folding the paper lest it rip.



Pinch the edge of the table as you slowly push the doll house forward.



As you continue to fold, make sure that edge doesn't rip by pressing down with



your fingers on both sides of the card. After you have folded the card shut and creased the edges the card is no longer at risk of tearing.

### Step 11:

#### Enjoy!



Thanks to Roman (age 7) and Theo (age 10) for modeling these pictures.